

# Enterprise complexity.

# Made simple.

Protege GX is an enterprise level integrated access control, intruder detection, and building automation solution with a feature set that is easy to operate, simple to integrate, and effortless to extend.

## Designed for the end user.

Designed with the end user in mind, Protege GX offers an intuitive and user friendly interface with graphical floor plans and highly customizable status pages for controlling and monitoring the system. Customizable alarm and event filters enable you to sort and categorize the event and alarm data that is shown. Display information relevant to your site and setup - not your neighbors.

## Endless integration possibilities.

Integration with a wide range of third party systems enables you to maximize the infrastructure and IT investments you already have available on site while adding value to existing technology. If an off the shelf solution doesn't meet your needs, our range of custom integration tools give you total flexibility to utilize your own experts to tailor a solution that does.

## Information at your fingertips.

Getting the information you need has never been easier or more accessible. Protege GX offers a commanding range of reporting capabilities, and you can even generate reports automatically at scheduled times and have them sent to a defined user via email. Powerful filtering and flexible reporting options enable you to quickly and easily obtain detailed and relevant event information:

- > Live filtering as you type
- > Custom complex filters
- > Drag and drop to order
- > Print, save and email directly from the software

## Anywhere, anytime access.

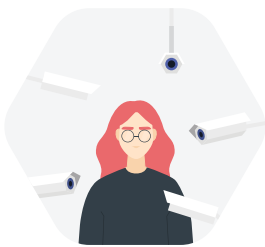
Mobile credentials complement the solution even further, by offering the convenience of card-free access from your mobile device.

## Effortless to extend.

Business doesn't stand still, so you need a solution that can keep pace with your changing requirements. The enterprise licensing model in Protege GX allows you to expand your site with ease, providing a solution that grows with you.

Optional features and a flexible model ensures you get the functionality you need, without paying for the features you don't. The base license comes packed with many extras including powerful reporting capability, CCTV integration, fully customizable status pages, graphical floor plans, and no limits on the number of users, events, schedules, areas, or hardware expansion.

Flexible license packs are available for doors, cameras, and many other features, enabling you to easily extend your system as your business grows. A ceiling (or license cap) prevents runaway license costs and ensures that right from the start, you know exactly how much the software is going to cost, no matter how much the system expands.



### Video Management Systems

Seamless integration enables you to control cameras, and view live and historical video footage from a single easy to use interface.



### Wireless & Offline Locking

Expand your existing access control system without the limitations by integrating your Protege system with a wireless and offline locking solution.



### Elevator Systems

Integrating an elevator control system increases building security and improves the flow of people.



### Biometrics

From unlocking smartphones to airport security, biometric technology has become part of our everyday life. Many businesses now use biometrics as a way to authenticate users and safeguard their enterprise.



### Building Management Systems

Access Control systems carry a lot of information about your building and its occupancy. Combine this with a Building Management System (BMS) to create a smart building that can make some very intelligent decisions.



### Custom Integration Tools

Our custom integration tools give you total control over the end solution and ensure you aren't constrained to specific software or hardware, enabling you to integrate with virtually any third party system or component.

## Contact us.

### ICT USA

ussales@ict.co  
+1 720 442 0767

### ICT CANADA

cansales@ict.co  
+1 647 724 3428

### ICT EMEA

emea-info@ict.co  
**Middle East** +971 4 372 4659

### ICT APAC

**Hong Kong**  
sales@ict.co  
+852 9281 0797

### Australia

aussales@ict.co  
+61 3 9068 6363

### New Zealand

sales@ict.co  
+64 9 476 7124